

NOTES:

1. TOTAL DISPLAY WEIGHT: APPROXIMATELY 70 LBS [-32 KG]
2. ALL ATTACHMENT HARDWARE TO BE ORDERED SEPARATELY
3. DIMENSIONS ARE APPROXIMATE AND SUBJECT TO CHANGE DUE TO DETAILED DESIGN CONSIDERATIONS
4. ALL CONSTRUCTION AND FABRICATION MUST MEET ALL APPLICABLE LOCAL, STATE, AND NATIONAL CODES
5. ALL ON-SITE WORK TO BE DONE IN ACCORDANCE WITH OSHA AND ALL LOCAL CODES THAT APPLY
6. CTS ASSUMES NO RESPONSIBILITY FOR INSTALLATIONS PERFORMED BY OTHERS
7. THIS DRAWING FOR DESIGN INTENT ONLY- VERIFY ALL CONSTRUCTION DETAILS WITH CTS THIS DRAWING FOR DESIGN INTENT ONLY- VERIFY ALL CONSTRUCTION DETAILS WITH CTS

A	INITIAL RELEASE	2020/07/07	VB
REV	DESCRIPTION	DATE	APP

THE INFORMATION ON THIS DRAWING IS SUBJECT TO CHANGE WITHOUT NOTICE

[WWW.COLORADOTIME.COM](http://WWW.COLORADOTIME.COM)

THIRD ANGLE PROJECTION

**TRADE SECRET**

The information and data contained herein is secret and is submitted in confidence, and shall not be disclosed, used, or duplicated for any purpose whatsoever without the prior written permission of Colorado Time Systems, Inc., 1551 E. 11th Street, Loveland Colorado, 80537. This legend shall be marked on any reproduction hereof in whole or in part. Receipt of this document shall be deemed to be an acceptance of the conditions specified herein.

DIMENSIONS ARE REPRESENTED AS FOLLOWS: INCH [MM]

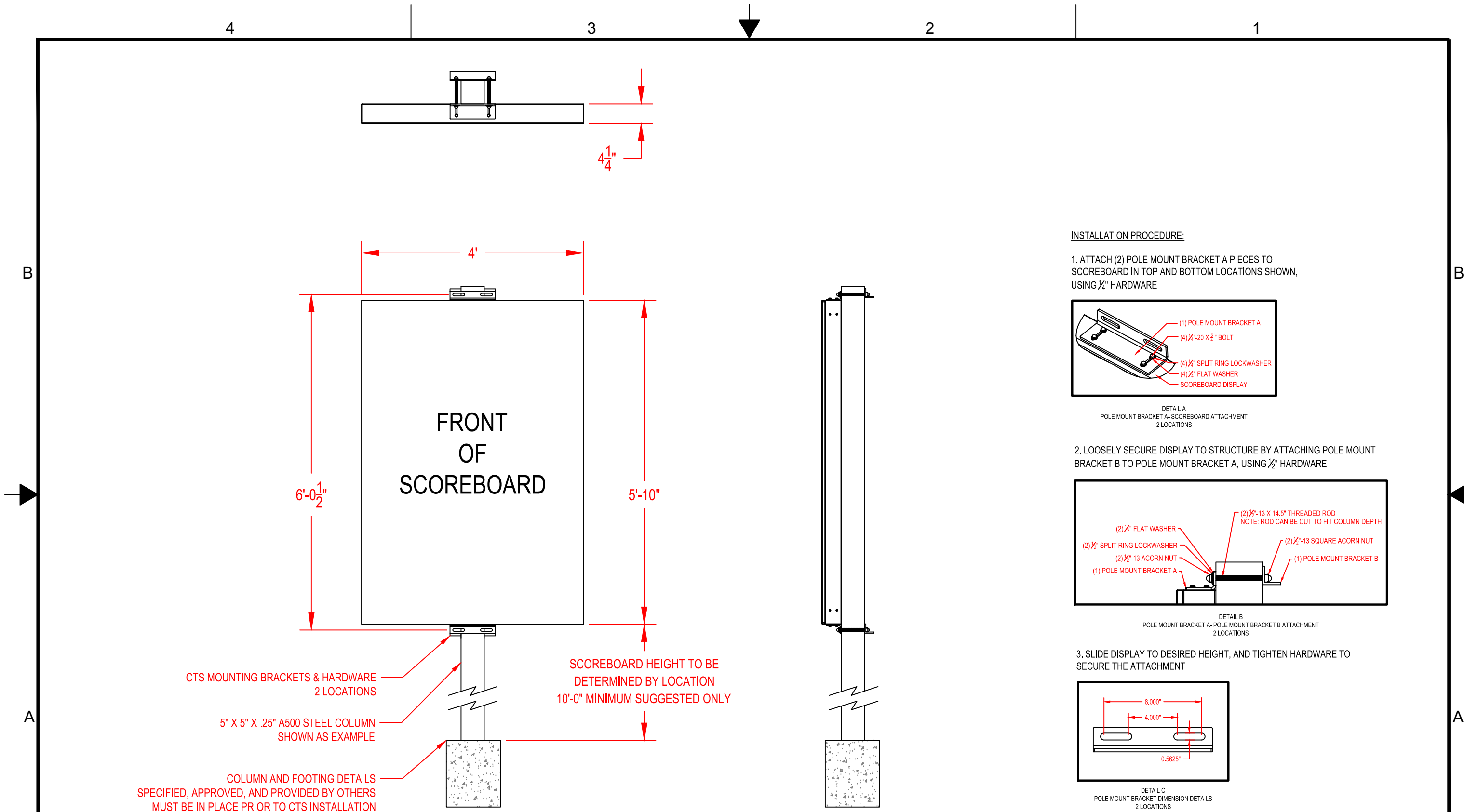
TOLERANCES EXCEPT AS NOTED	
INCHES	MM
X ± 0.02	.X ±
ANGLES ± 1	
DO NOT SCALE THIS DRAWING	
SCALE	SHEET 1 OF 3

DRAWN BY	DATE
V. BEDNARSKI	2020/07/07
ENG. APPROVAL	DATE
PROJECT ENG.	DATE

TITLE
MS-0150 POLE MOUNT GENERAL LAYOUT

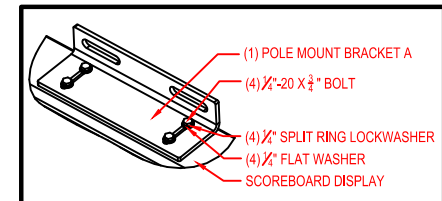
1551 E. 11th. St.  
Loveland, CO 80537  
P: (970) 667-1000  
F: (970) 667-5876  
WWW.COLORADOTIME.COM

SIZE	DRAWING NUMBER	REV.
B	S2020-002-002	A



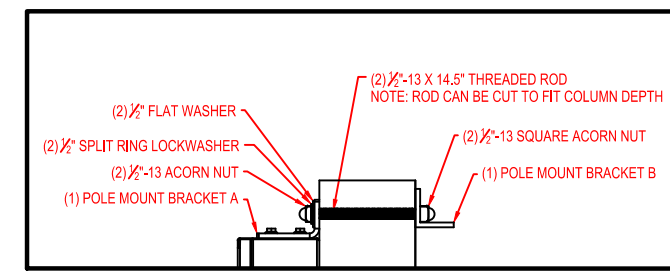
**INSTALLATION PROCEDURE:**

1. ATTACH (2) POLE MOUNT BRACKET A PIECES TO SCOREBOARD IN TOP AND BOTTOM LOCATIONS SHOWN, USING 1/4" HARDWARE



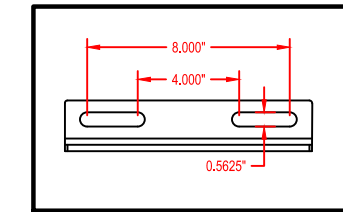
DETAIL A  
POLE MOUNT BRACKET A-SCOREBOARD ATTACHMENT  
2 LOCATIONS

2. LOOSELY SECURE DISPLAY TO STRUCTURE BY ATTACHING POLE MOUNT BRACKET B TO POLE MOUNT BRACKET A, USING 1/2" HARDWARE



DETAIL B  
POLE MOUNT BRACKET A- POLE MOUNT BRACKET B ATTACHMENT  
2 LOCATIONS

3. SLIDE DISPLAY TO DESIRED HEIGHT, AND TIGHTEN HARDWARE TO SECURE THE ATTACHMENT

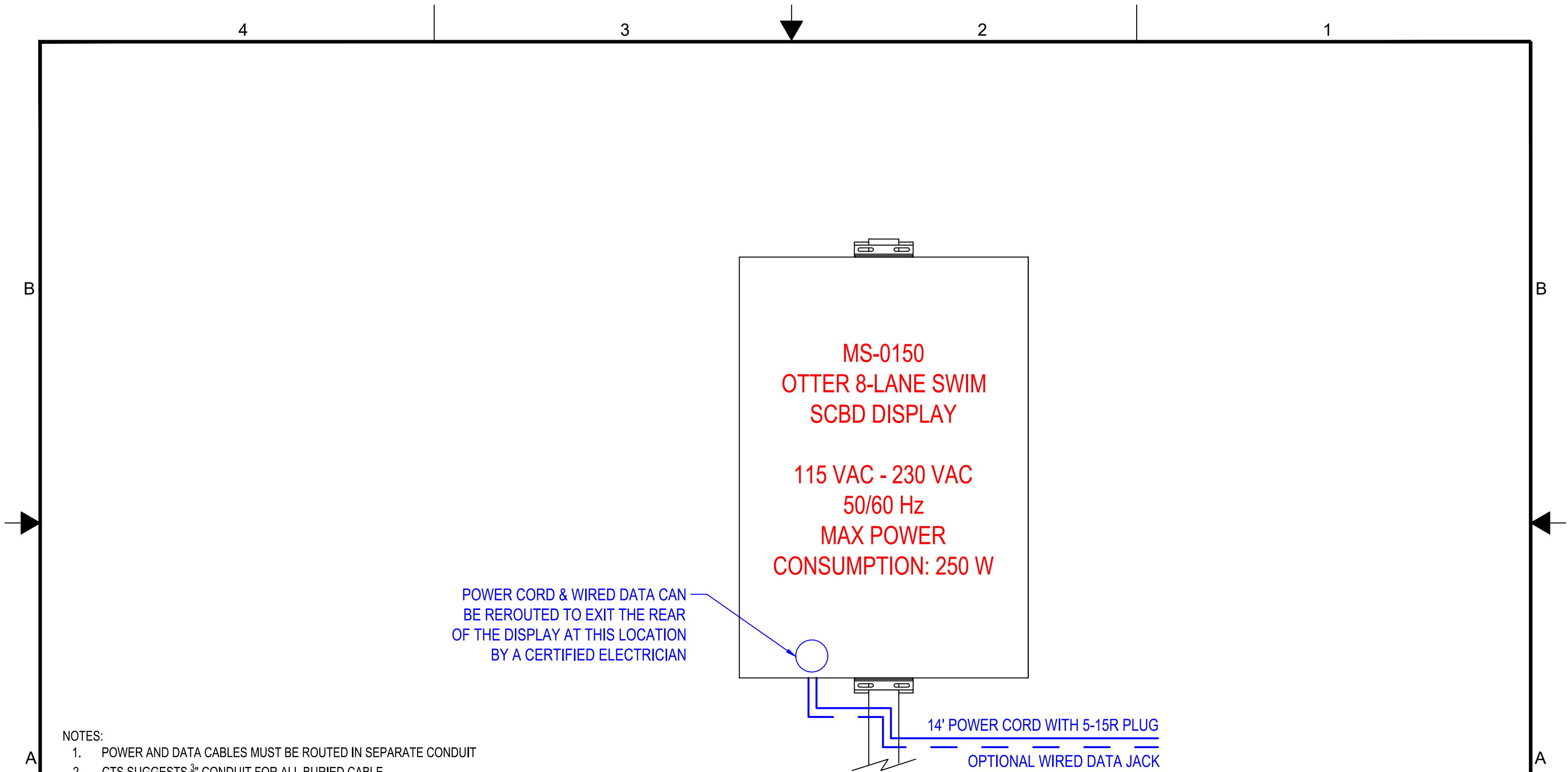


DETAIL C  
POLE MOUNT BRACKET DIMENSION DETAILS  
2 LOCATIONS

**WWW.COLORADOTIME.COM**

THE INFORMATION ON THIS DRAWING IS SUBJECT TO CHANGE WITHOUT NOTICE

<p>THIRD ANGLE PROJECTION</p>	<p><b>TRADE SECRET</b></p> <p>The information and data contained herein is secret and is submitted in confidence, and shall not be disclosed, used, or duplicated for any purpose whatsoever without the prior written permission of Colorado Time Systems, Inc., 1551 E. 11th Street, Loveland Colorado, 80537. This legend shall be marked on any reproduction hereof in whole or in part. Receipt of this document shall be deemed to be an acceptance of the conditions specified herein.</p>	<p>DIMENSIONS ARE REPRESENTED AS FOLLOWS: INCH [MM]</p>		<p>DRAWN BY</p> <p>V. BEDNARSKI</p>	<p>DATE</p> <p>2020/07/07</p>	<p>TITLE</p> <p>MS-0150 POLE MOUNT STRUCTURAL DETAILS</p>	<p>1551 E. 11th. St. Loveland, CO 80537 P: (970) 667-1000 F: (970) 667-5876 WWW.COLORADOTIME.COM</p>
		<p>TOLERANCES EXCEPT AS NOTED</p> <p>INCHES .02 X ±</p> <p>MM .1 X ±</p> <p>ANGLES ± 1</p> <p>DO NOT SCALE THIS DRAWING</p> <p>SCALE NTS SHEET 2 OF 3</p>	<p>ENG. APPROVAL</p> <p>PROJECT ENG.</p>	<p>DATE</p>	<p>DATE</p>		

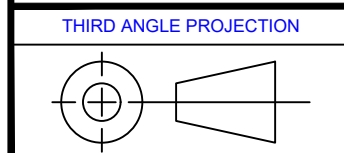


NOTES:

1. POWER AND DATA CABLES MUST BE ROUTED IN SEPARATE CONDUIT
2. CTS SUGGESTS 3/4" CONDUIT FOR ALL BURIED CABLE
3. EACH DISPLAY IS EQUIPPED WITH A 14' POWER CABLE WITH A NEMA 5-15R PLUG. NOTE THE EXIT LOCATION IS ON THE BOTTOM OF THE DISPLAY. THIS CABLE IS ONLY TO BE USED IN CONJUNCTION WITH AN OUTDOOR RATED RECEPTACLE
4. IF USING WIRED DATA, TERMINATE DATA CONDUIT TO JUNCTION BOX NEAR DATA JACK LOCATION
5. SCOREBOARD DOES NOT INCLUDE ON/OFF POWER SWITCH. INSTALL OPTIONAL SWITCH/DISCONNECT FOR ABILITY TO TURN SCOREBOARD ON/OFF IF NEEDED OR DESIRED
6. THIS SIGN IS INTENDED TO BE INSTALLED IN ACCORDANCE WITH THE REQUIREMENTS OF ARTICLE 600 OF THE NATIONAL ELECTRIC CODE AND/OR OTHER APPLICABLE CODES. THIS INCLUDES PROPER GROUNDING AND BONDING OF THE SCOREBOARD

THE INFORMATION ON THIS DRAWING IS SUBJECT TO CHANGE WITHOUT NOTICE

**WWW.COLORADOTIME.COM**



**TRADE SECRET**  
The information and data contained herein is secret and is submitted in confidence, and shall not be disclosed, used, or duplicated for any purpose whatsoever without the prior written permission of Colorado Time Systems, Inc., 1551 E. 11th Street, Loveland Colorado, 80537. This legend shall be marked on any reproduction hereof in whole or in part. Receipt of this document shall be deemed to be an acceptance of the conditions specified herein.

DIMENSIONS ARE REPRESENTED AS FOLLOWS: INCH [MM]	
TOLERANCES EXCEPT AS NOTED	
INCHES	MM
X ± 0.02	.X ±
ANGLES ± 1	
DO NOT SCALE THIS DRAWING	
SCALE	SHEET 3 OF 3
NTS	

DRAWN BY	DATE
V. BEDNARSKI	2020/07/07
ENG. APPROVAL	DATE
PROJECT ENG.	DATE

TITLE
MS-0150 POLE MOUNT ELECTRICAL DETAILS

	<small>1551 E. 11th. St.          Loveland, CO 80537          P: (970) 667-1000          F: (970) 667-5876          WWW.COLORADOTIME.COM</small>					
	<table border="1"> <tr> <td>SIZE</td> <td>DRAWING NUMBER</td> <td>REV.</td> </tr> <tr> <td>B</td> <td>S2020-002-002</td> <td>A</td> </tr> </table>	SIZE	DRAWING NUMBER	REV.	B	S2020-002-002
SIZE	DRAWING NUMBER	REV.				
B	S2020-002-002	A				