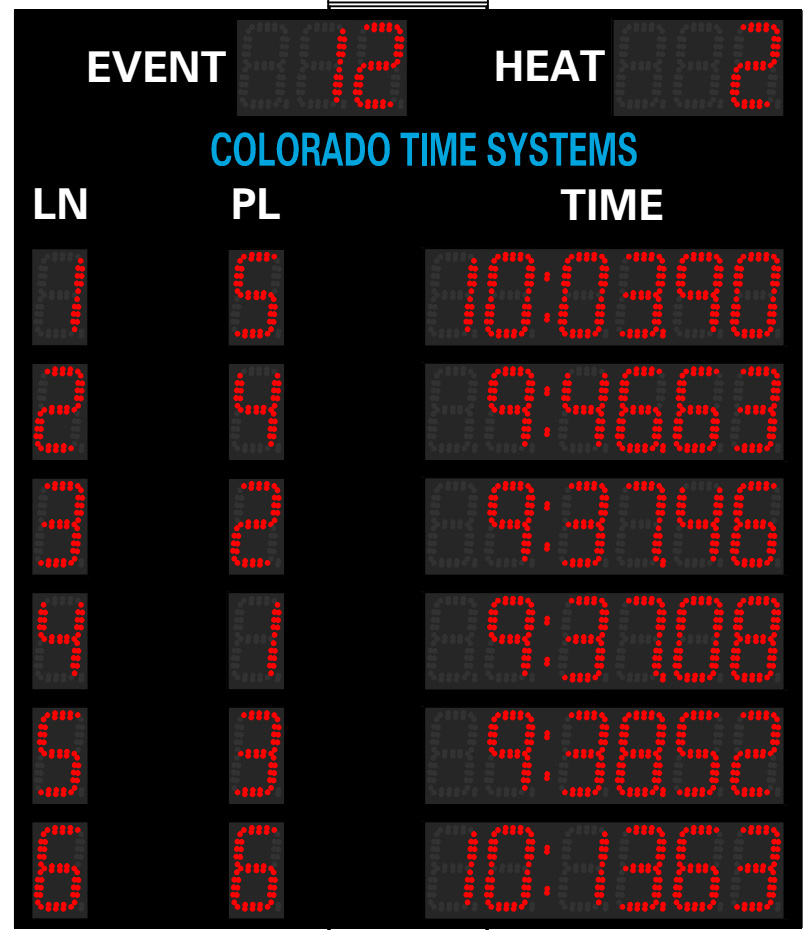


4'



4'-8"

10'-0" MINIMUM

- NOTES:
1. TOTAL DISPLAY WEIGHT: APPROXIMATELY 60 LBS [27.2 KG]
 2. ALL ATTACHMENT HARDWARE TO BE ORDERED SEPARATELY
 3. DIMENSIONS ARE APPROXIMATE AND SUBJECT TO CHANGE DUE TO DETAILED DESIGN CONSIDERATIONS
 4. ALL CONSTRUCTION AND FABRICATION MUST MEET ALL APPLICABLE LOCAL, STATE, AND NATIONAL CODES
 5. ALL ON-SITE WORK TO BE DONE IN ACCORDANCE WITH OSHA AND ALL LOCAL CODES THAT APPLY
 6. CTS ASSUMES NO RESPONSIBILITY FOR INSTALLATIONS PERFORMED BY OTHERS

A	INITIAL RELEASE	3/3/2015	PJS
REV	DESCRIPTION	DATE	APP

THE INFORMATION ON THIS DRAWING IS SUBJECT TO CHANGE WITHOUT NOTICE

WWW.COLORADOTIME.COM

REVISIONS

THIRD ANGLE PROJECTION

TRADE SECRET

The information and data contained herein is secret and is submitted in confidence, and shall not be disclosed, used, or duplicated for any purpose whatsoever without the prior written permission of Colorado Time Systems, Inc., 1551 E. 11th Street, Loveland Colorado, 80537. This legend shall be marked on any reproduction hereof in whole or in part. Receipt of this document shall be deemed to be an acceptance of the conditions specified herein.

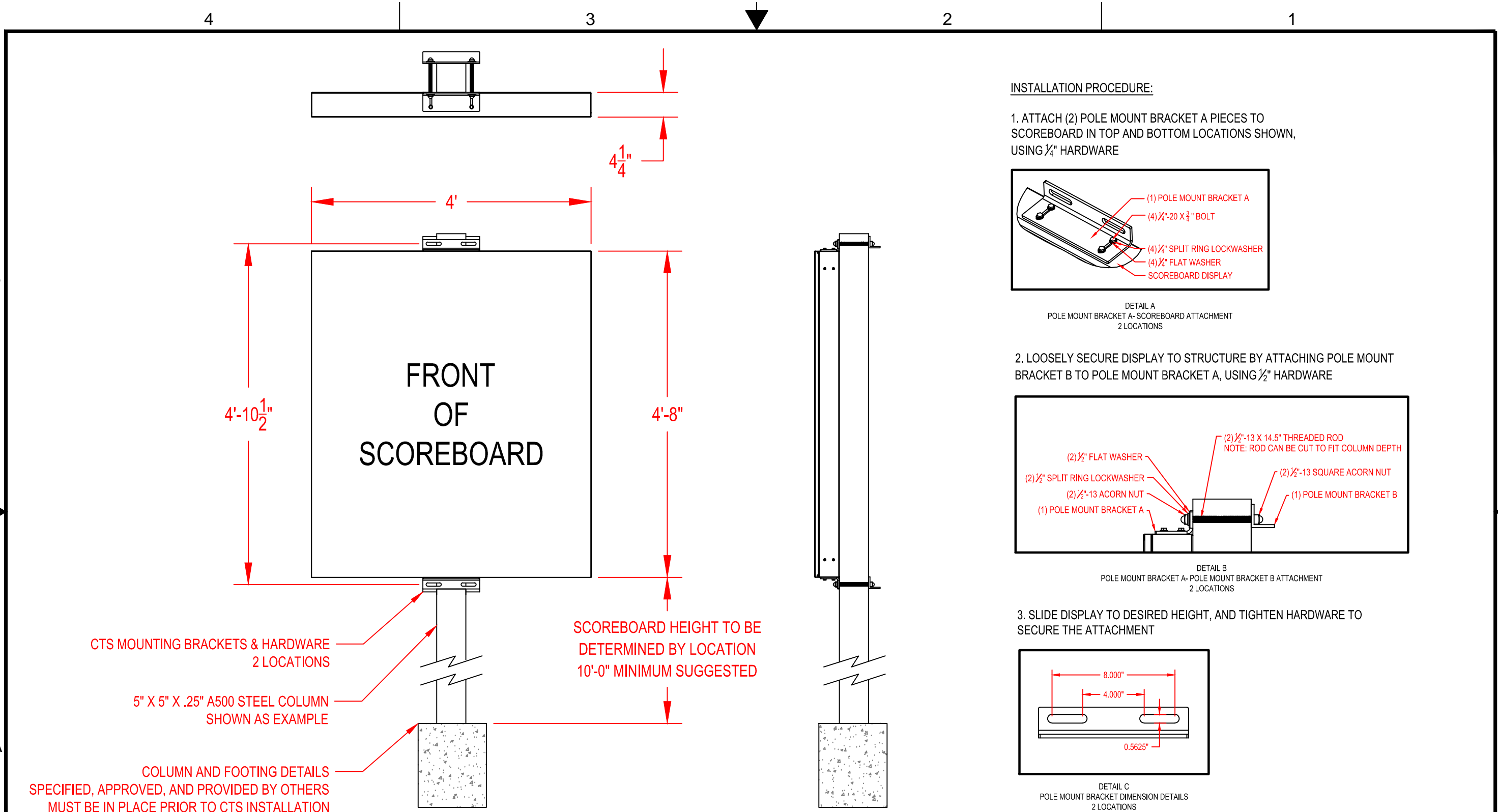
DIMENSIONS ARE REPRESENTED AS FOLLOWS: INCH [MM]

TOLERANCES EXCEPT AS NOTED	
INCHES	MM
X ± 0.02	X ±
ANGLES ± 1	
DO NOT SCALE THIS DRAWING	
SCALE	SHEET 1 OF 3

DRAWN BY	DATE	TITLE
P.SCHIEL	3/3/15	MS-0149
ENG. APPROVAL	DATE	POLE MOUNT
PROJECT ENG.	DATE	GENERAL LAYOUT

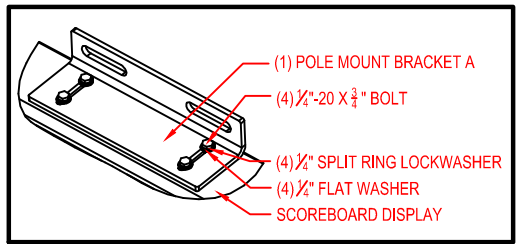
SIZE	DRAWING NUMBER	REV.
B	S2015-002-004	A

1551 E. 11th. St.
 Loveland, CO 80537
 P: (970) 667-1000
 F: (970) 667-5876
WWW.COLORADOTIME.COM



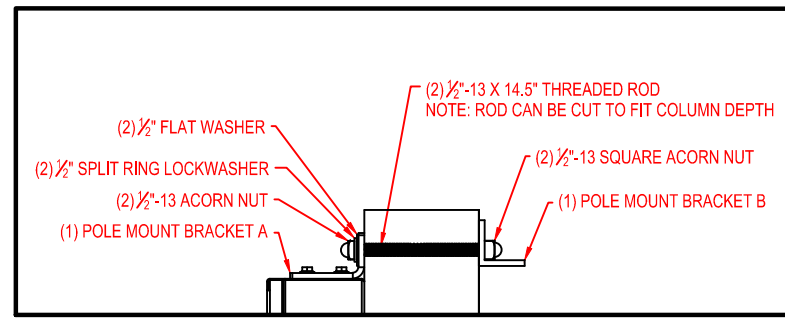
INSTALLATION PROCEDURE:

1. ATTACH (2) POLE MOUNT BRACKET A PIECES TO SCOREBOARD IN TOP AND BOTTOM LOCATIONS SHOWN, USING 1/4" HARDWARE



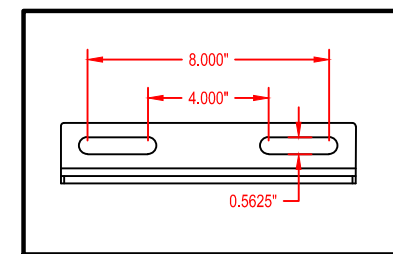
DETAIL A
POLE MOUNT BRACKET A- SCOREBOARD ATTACHMENT
2 LOCATIONS

2. LOOSELY SECURE DISPLAY TO STRUCTURE BY ATTACHING POLE MOUNT BRACKET B TO POLE MOUNT BRACKET A, USING 1/2" HARDWARE



DETAIL B
POLE MOUNT BRACKET A- POLE MOUNT BRACKET B ATTACHMENT
2 LOCATIONS

3. SLIDE DISPLAY TO DESIRED HEIGHT, AND TIGHTEN HARDWARE TO SECURE THE ATTACHMENT



DETAIL C
POLE MOUNT BRACKET DIMENSION DETAILS
2 LOCATIONS

CTS MOUNTING BRACKETS & HARDWARE
2 LOCATIONS

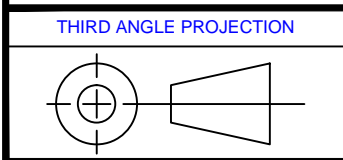
5" X 5" X .25" A500 STEEL COLUMN
SHOWN AS EXAMPLE

COLUMN AND FOOTING DETAILS
SPECIFIED, APPROVED, AND PROVIDED BY OTHERS
MUST BE IN PLACE PRIOR TO CTS INSTALLATION

SCOREBOARD HEIGHT TO BE
DETERMINED BY LOCATION
10'-0" MINIMUM SUGGESTED

WWW.COLORADOTIME.COM

THE INFORMATION ON THIS DRAWING IS SUBJECT TO CHANGE WITHOUT NOTICE



TRADE SECRET

The information and data contained herein is secret and is submitted in confidence, and shall not be disclosed, used, or duplicated for any purpose whatsoever without the prior written permission of Colorado Time Systems, Inc., 1551 E. 11th Street, Loveland Colorado, 80537. This legend shall be marked on any reproduction hereof in whole or in part. Receipt of this document shall be deemed to be an acceptance of the conditions specified herein.

DIMENSIONS ARE REPRESENTED AS FOLLOWS: INCH [MM]	
TOLERANCES EXCEPT AS NOTED	
INCHES	MM
X ± 0.02	X ±
ANGLES ± 1	
DO NOT SCALE THIS DRAWING	
SCALE	SHEET 2 OF 3
NTS	

DRAWN BY	P.SCHIEL
DATE	3/3/15
ENG. APPROVAL	
PROJECT ENG.	

DATE	
DATE	

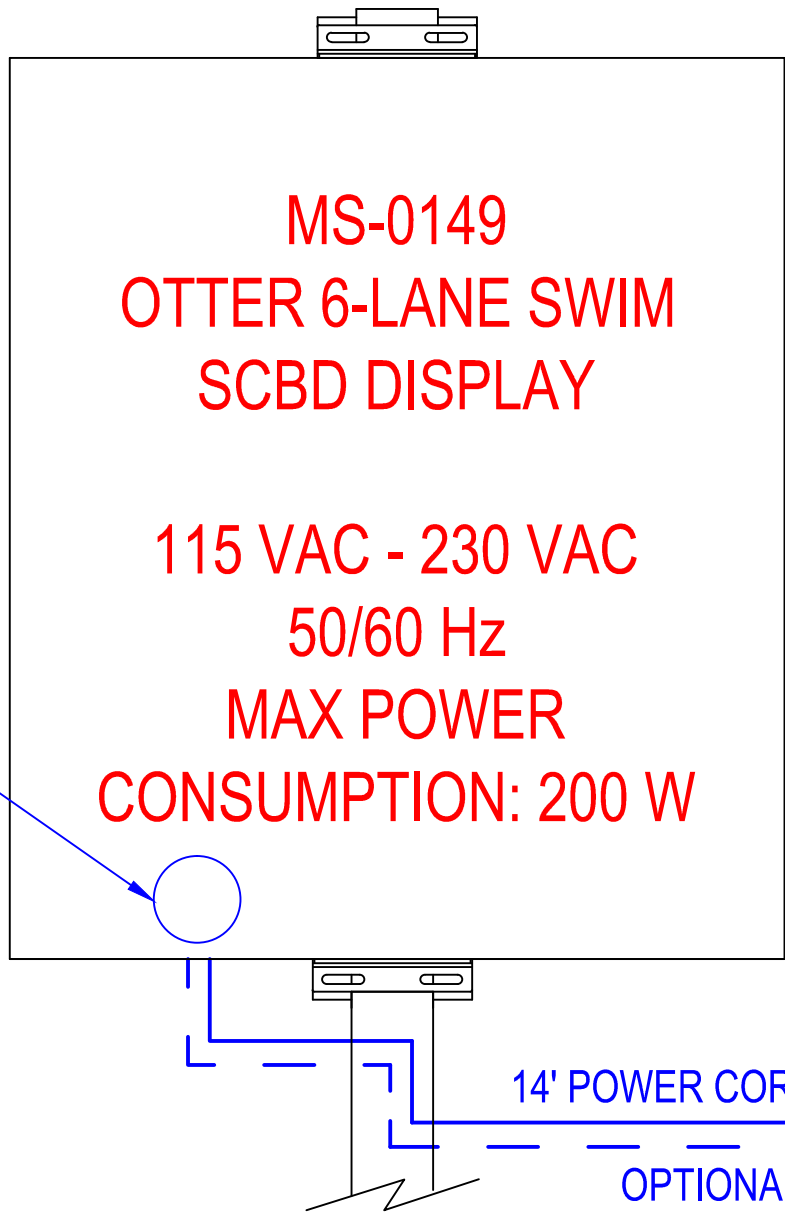
TITLE	MS-0149 POLE MOUNT STRUCTURAL DETAILS
-------	---

Colorado
TIME SYSTEMS

1551 E. 11th. St. Loveland, CO 80537 P: (970) 667-1000 F: (970) 667-5876 WWW.COLORADOTIME.COM	SIZE B	DRAWING NUMBER S2015-002-004	REV. A
---	-----------	---------------------------------	-----------

4 3 2 1

B A



**MS-0149
OTTER 6-LANE SWIM
SCBD DISPLAY**

**115 VAC - 230 VAC
50/60 Hz
MAX POWER
CONSUMPTION: 200 W**

POWER CORD & WIRED DATA CAN
BE REROUTED TO EXIT THE REAR
OF THE DISPLAY AT THIS LOCATION
BY A CERTIFIED ELECTRICIAN

14' POWER CORD WITH 5-15R PLUG
OPTIONAL WIRED DATA JACK

NOTES:

1. POWER AND DATA CABLES MUST BE ROUTED IN SEPARATE CONDUIT
2. CTS SUGGESTS 3/4" CONDUIT FOR ALL BURIED CABLE
3. EACH DISPLAY IS EQUIPPED WITH A 14' POWER CABLE WITH A NEMA 5-15R PLUG. NOTE THE EXIT LOCATION IS ON THE BOTTOM OF THE DISPLAY. THIS CABLE IS ONLY TO BE USED IN CONJUNCTION WITH AN OUTDOOR RATED RECEPTACLE
4. IF USING WIRED DATA, TERMINATE DATA CONDUIT TO JUNCTION BOX NEAR DATA JACK LOCATION
5. SCOREBOARD DOES NOT INCLUDE ON/OFF POWER SWITCH. INSTALL OPTIONAL SWITCH/DISCONNECT FOR ABILITY TO TURN SCOREBOARD ON/OFF IF NEEDED OR DESIRED
6. THIS SIGN IS INTENDED TO BE INSTALLED IN ACCORDANCE WITH THE REQUIREMENTS OF ARTICLE 600 OF THE NATIONAL ELECTRIC CODE AND/OR OTHER APPLICABLE CODES. THIS INCLUDES PROPER GROUNDING AND BONDING OF THE SCOREBOARD

WWW.COLORADOTIME.COM

THE INFORMATION ON THIS DRAWING IS SUBJECT TO CHANGE WITHOUT NOTICE

	TRADE SECRET <small>The information and data contained herein is secret and is submitted in confidence, and shall not be disclosed, used, or duplicated for any purpose whatsoever without the prior written permission of Colorado Time Systems, Inc., 1551 E. 11th Street, Loveland Colorado, 80537. This legend shall be marked on any reproduction hereof in whole or in part. Receipt of this document shall be deemed to be an acceptance of the conditions specified herein.</small>	<small>DIMENSIONS ARE REPRESENTED AS FOLLOWS: INCH [MM]</small>		<small>DRAWN BY</small> P.SCHIEL	<small>DATE</small> 3/3/15	<small>TITLE</small> MS-0149 POLE MOUNT ELECTRICAL DETAILS		<small>1551 E. 11th. St. Loveland, CO 80537 P: (970) 667-1000 F: (970) 667-5876 WWW.COLORADOTIME.COM</small>
		<small>TOLERANCES EXCEPT AS NOTED</small> INCHES .02 X ± MM X ±	<small>ENG. APPROVAL</small> PROJECT ENG.	<small>DATE</small> DATE	<small>DATE</small> DATE			
		<small>ANGLES ±</small> DO NOT SCALE THIS DRAWING	<small>SCALE</small> NTS	<small>SHEET</small> 3 OF 3	<small>SIZE</small> B	<small>DRAWING NUMBER</small> S2015-002-004	<small>REV.</small> A	

4 3 2 1