

- NOTES:
1. SAMPLE RENDERING ONLY
 2. TOTAL DISPLAY WEIGHT: APPROXIMATELY 60 LBS [27.2 KG]
 3. ALL ATTACHMENT HARDWARE TO BE ORDERED SEPARATELY
 4. DIMENSIONS ARE APPROXIMATE AND SUBJECT TO CHANGE DUE TO DETAILED DESIGN CONSIDERATIONS
 5. ALL CONSTRUCTION AND FABRICATION MUST MEET ALL APPLICABLE LOCAL, STATE, AND NATIONAL CODES
 6. ALL ON-SITE WORK TO BE DONE IN ACCORDANCE WITH OSHA AND ALL LOCAL CODES THAT APPLY
 7. CTS ASSUMES NO RESPONSIBILITY FOR INSTALLATIONS PERFORMED BY OTHERS

A	RELEASE FOR INFORMATION	8/20/15	PJS
REV	DESCRIPTION	DATE	APP

THE INFORMATION ON THIS DRAWING IS SUBJECT TO CHANGE WITHOUT NOTICE

WWW.COLORADOTIME.COM

REVISIONS

THIRD ANGLE PROJECTION

TRADE SECRET


The information and data contained herein is secret and is submitted in confidence, and shall not be disclosed, used, or duplicated for any purpose whatsoever without the prior written permission of Colorado Time Systems, Inc., 1551 E. 11th Street, Loveland Colorado, 80537. This legend shall be marked on any reproduction hereof in whole or in part. Receipt of this document shall be deemed to be an acceptance of the conditions specified herein.

DIMENSIONS ARE REPRESENTED AS FOLLOWS: INCH [MM]

TOLERANCES EXCEPT AS NOTED	
INCHES	MM
X ± 0.02	X ±
ANGLES ± 1	
DO NOT SCALE THIS DRAWING	
SCALE	SHEET 1 OF 3

DRAWN BY	DATE
P.SCHIEL	8/20/15
ENG. APPROVAL	DATE
PROJECT ENG.	DATE

TITLE
MS-0149 CORNER MOUNT GENERAL LAYOUT



1551 E. 11th. St.
Loveland, CO 80537
P: (970) 667-1000
F: (970) 667-5876
WWW.COLORADOTIME.COM

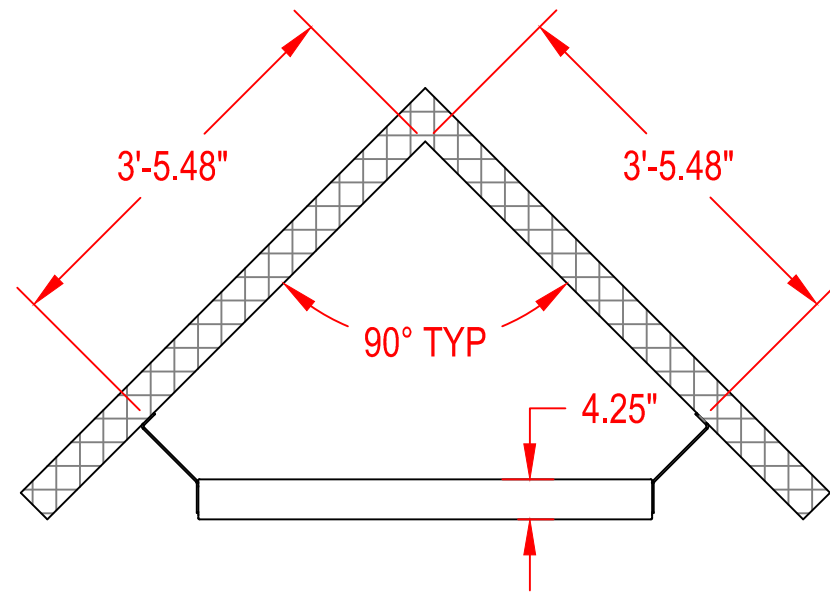
SIZE	DRAWING NUMBER	REV.
B	S2015-002-011	A

4

3

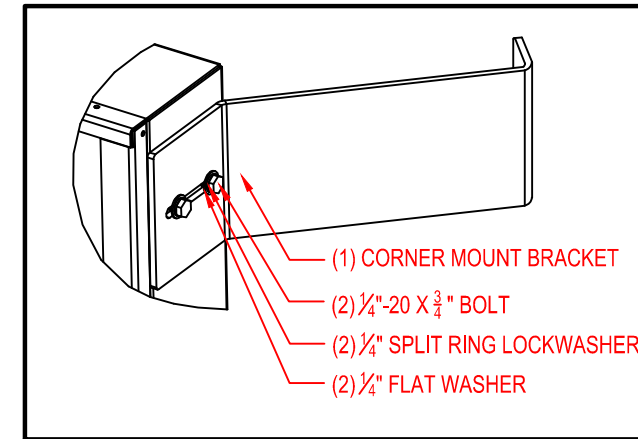
2

1



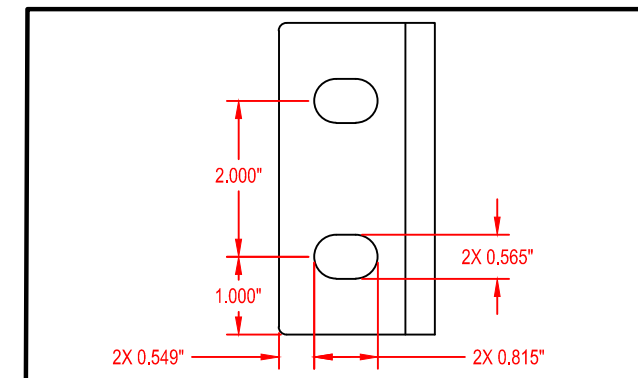
INSTALLATION PROCEDURE:

1. ATTACH (4) CORNER MOUNT BRACKETS TO SCOREBOARD IN LOCATIONS SHOWN, USING 1/4\"/>

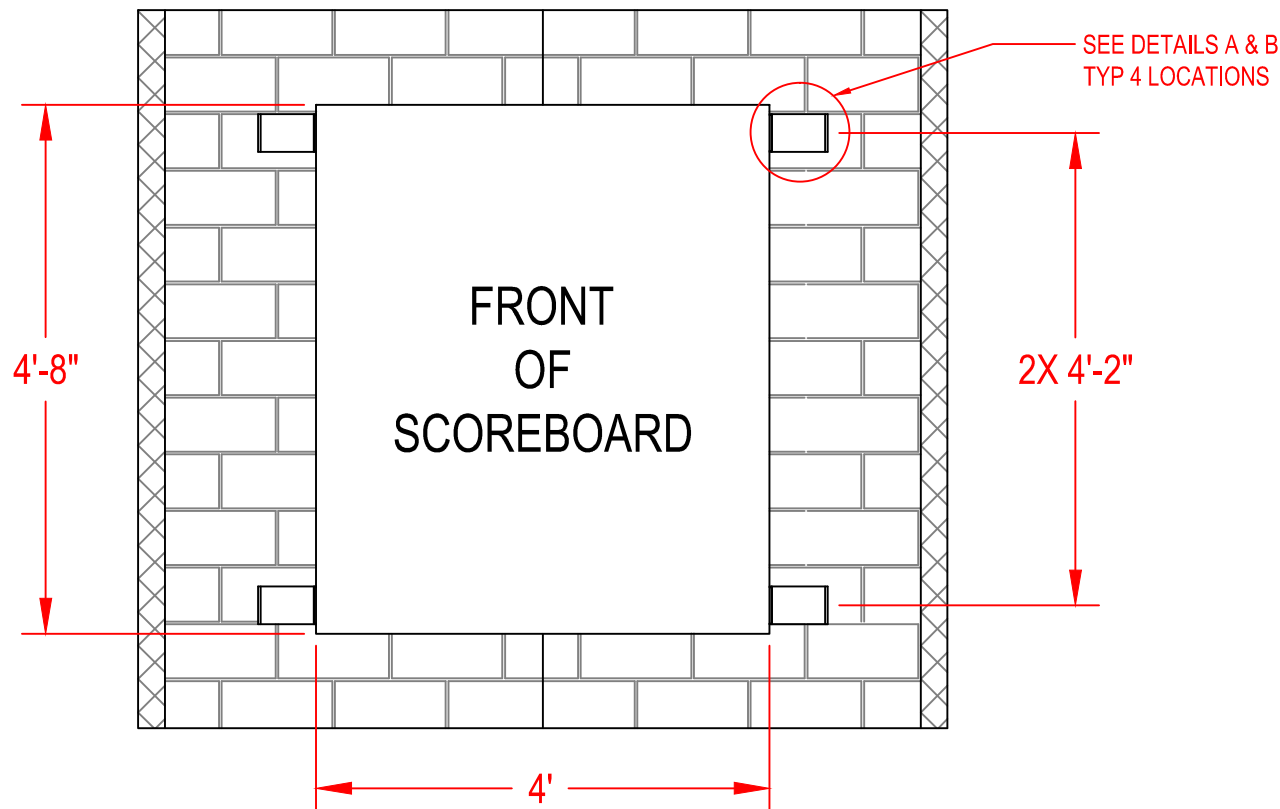


DETAIL A
CORNER MOUNT BRACKET- SCOREBOARD ATTACHMENT
4 LOCATIONS

2. SECURE CORNER MOUNT BRACKETS TO WALL/STRUCTURE USING APPROPRIATE HARDWARE -HARDWARE TO BE SPECIFIED AND APPROVED BY OTHERS. (2) ANCHORS REQUIRED PER BRACKET -ENSURE DISPLAY IS LEVEL, PLUMB, AND SQUARE



DETAIL B
CORNER MOUNT BRACKET- WALL ATTACHMENT
4 LOCATIONS

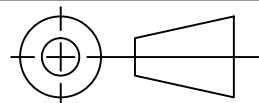


SEE DETAILS A & B
TYP 4 LOCATIONS

WWW.COLORADOTIME.COM

THE INFORMATION ON THIS DRAWING IS SUBJECT TO CHANGE WITHOUT NOTICE

THIRD ANGLE PROJECTION



TRADE SECRET

The information and data contained herein is secret and is submitted in confidence, and shall not be disclosed, used, or duplicated for any purpose whatsoever without the prior written permission of Colorado Time Systems, Inc., 1551 E. 11th Street, Loveland Colorado, 80537. This legend shall be marked on any reproduction hereof in whole or in part. Receipt of this document shall be deemed to be an acceptance of the conditions specified herein.

DIMENSIONS ARE REPRESENTED AS FOLLOWS: INCH [MM]

TOLERANCES EXCEPT AS NOTED

INCHES .002 X ± MM .X ±

ANGLES ± 1

DO NOT SCALE THIS DRAWING

SCALE NTS SHEET 2 OF 3

DRAWN BY

P.SCHIEL

DATE

8/20/15

ENG. APPROVAL

DATE

PROJECT ENG.

DATE

TITLE

MS-0149
CORNER MOUNT
STRUCTURAL DETAILS



1551 E. 11th. St.
Loveland, CO 80537
P: (970) 667-1000
F: (970) 667-5876
WWW.COLORADOTIME.COM

SIZE
B

DRAWING NUMBER

S2015-002-011

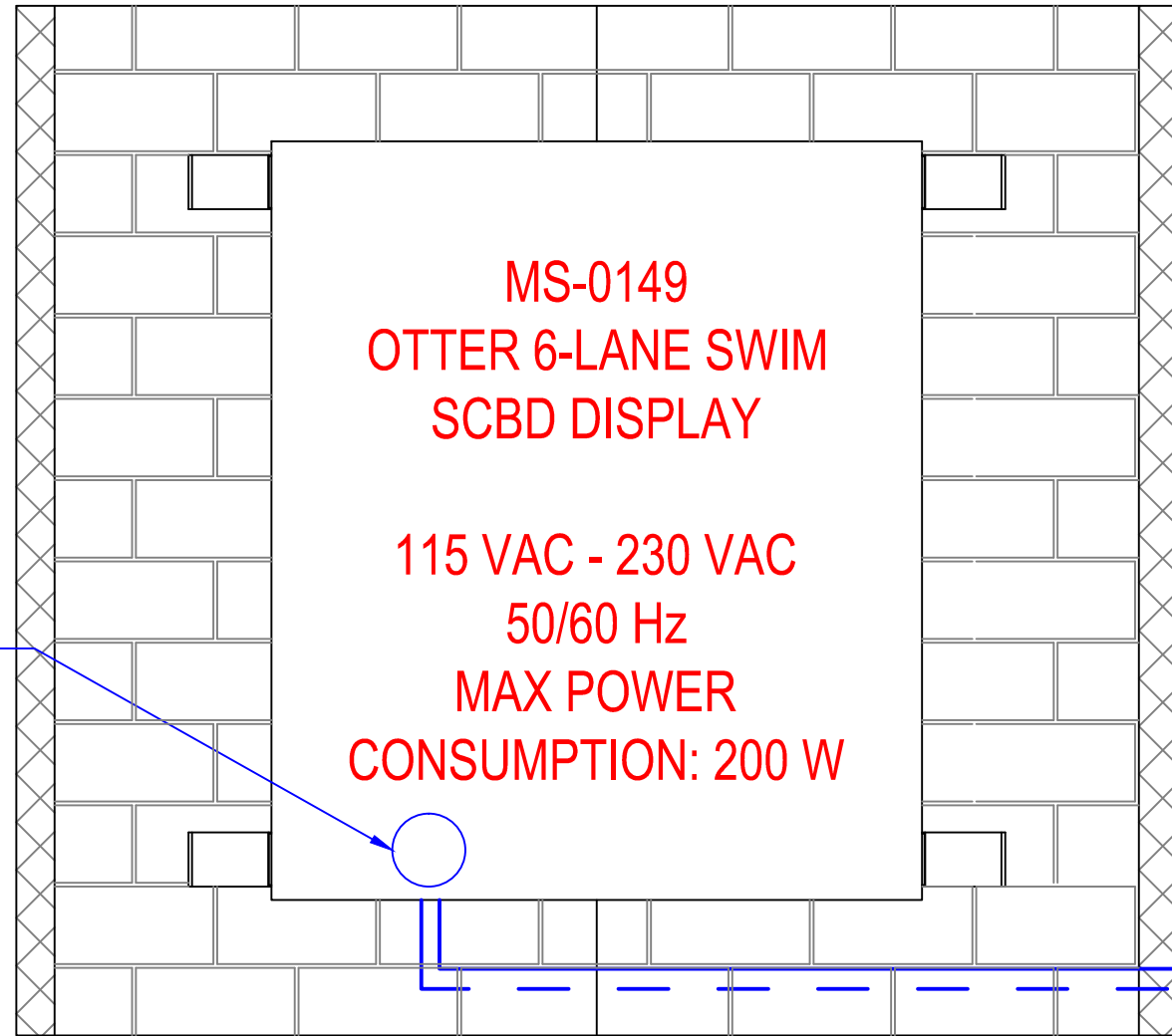
REV.
A

4

3

2

1



POWER CORD & WIRED DATA CAN BE REROUTED TO EXIT THE REAR OF THE DISPLAY AT THIS LOCATION BY A CERTIFIED ELECTRICIAN

14' POWER CORD WITH 5-15R PLUG
OPTIONAL WIRED DATA JACK

NOTES:

1. POWER AND DATA CABLES MUST BE ROUTED IN SEPARATE CONDUIT
2. CTS SUGGESTS 3/4" CONDUIT FOR ALL BURIED CABLE
3. EACH DISPLAY IS EQUIPPED WITH A 14' POWER CABLE WITH A NEMA 5-15R PLUG. NOTE THE EXIT LOCATION IS ON THE BOTTOM OF THE DISPLAY. THIS CABLE IS ONLY TO BE USED IN CONJUNCTION WITH AN OUTDOOR RATED RECEPTACLE
4. IF USING WIRED DATA, TERMINATE DATA CONDUIT TO JUNCTION BOX NEAR DATA JACK LOCATION
5. SCOREBOARD DOES NOT INCLUDE ON/OFF POWER SWITCH. INSTALL OPTIONAL SWITCH/DISCONNECT FOR ABILITY TO TURN SCOREBOARD ON/OFF IF NEEDED OR DESIRED
6. THIS SIGN IS INTENDED TO BE INSTALLED IN ACCORDANCE WITH THE REQUIREMENTS OF ARTICLE 600 OF THE NATIONAL ELECTRIC CODE AND/OR OTHER APPLICABLE CODES. THIS INCLUDES PROPER GROUNDING AND BONDING OF THE SCOREBOARD

THE INFORMATION ON THIS DRAWING IS SUBJECT TO CHANGE WITHOUT NOTICE

	<p>TRADE SECRET</p> <p><small>The information and data contained herein is secret and is submitted in confidence, and shall not be disclosed, used, or duplicated for any purpose whatsoever without the prior written permission of Colorado Time Systems, Inc., 1551 E. 11th Street, Loveland Colorado, 80537. This legend shall be marked on any reproduction hereof in whole or in part. Receipt of this document shall be deemed to be an acceptance of the conditions specified herein.</small></p>	<p>DIMENSIONS ARE REPRESENTED AS FOLLOWS: INCH [MM]</p>		<p>DRAWN BY</p> <p>P.SCHIEL</p>	<p>DATE</p> <p>8/20/15</p>	<p>TITLE</p> <p>MS-0149 CORNER MOUNT ELECTRICAL DETAILS</p>	<p>1551 E. 11th. St. Loveland, CO 80537 P: (970) 667-1000 F: (970) 667-5876 WWW.COLORADOTIME.COM</p>	<p>SIZE</p> <p>B</p>	<p>DRAWING NUMBER</p> <p>S2015-002-011</p>	<p>REV.</p> <p>A</p>
		<p>TOLERANCES EXCEPT AS NOTED</p> <p>INCHES .02 X ±</p> <p>MM .X ±</p> <p>ANGLES ± 1</p> <p>DO NOT SCALE THIS DRAWING</p> <p>SCALE NTS SHEET 3 OF 3</p>	<p>ENG. APPROVAL</p> <p>PROJECT ENG.</p>	<p>DATE</p> <p>DATE</p>						

WWW.COLORADOTIME.COM