

**Colorado  
TIME SYSTEMS**  
A PLAYCORE Company

## **DisplayLink<sup>plus</sup> for LED Video Displays**

*High Impact Visuals. Dynamic Technology.*







# DisplayLink<sup>plus</sup>

## Complete Control For Your Video Displays

---

DisplayLinkplus (DL+) software is a dynamic software interface program designed specifically for CTS LED Video Displays. DL+ provides robust integration of scoring, timing, graphics, and animation to your display.

DL+ interfaces with all current CTS timing equipment and many third party meet management software packages. DL+ supports most sports.

The computer provided with your LED matrix display comes pre-loaded with the DL+ software, which includes a template editor and sequence editor for easy content creation and management. DL+ supports multiple displays from one computer, and up to four CTS timing consoles or multisport tabletop controllers.

### Key Features

- **Drag & Drop Animations and Graphics:** Use DL+ to display graphics and animations by dragging the image from the Library over to the Active Display window.
- **Template Overlay:** The template overlay feature allows you to display timing, scoring, and other data on top of a video, animation, or image running in the background.
- **Slide Show Capabilities:** Create your own slide shows with the Sequence Editor and set them to run on a continual loop.



# DL+ Template Editor

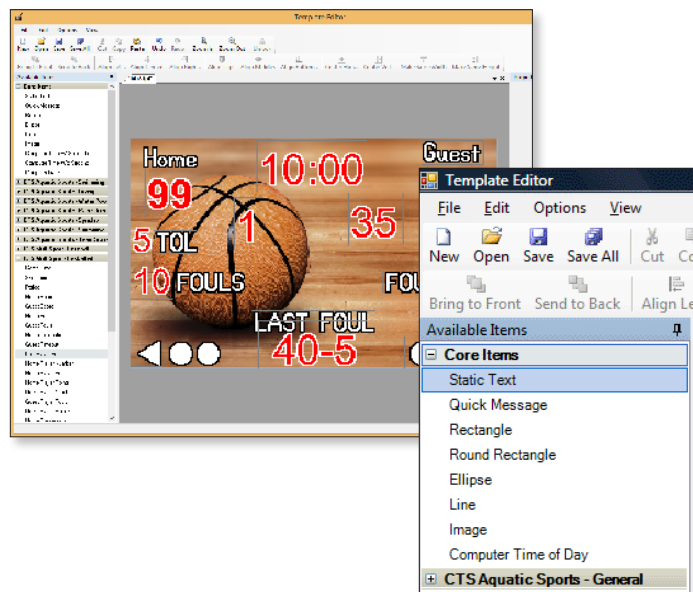


Templates are the DL+ files that tell your display where to place your timing, scoring and meet management information. You can have an unlimited number of templates for every sport. With Template Editor, you can easily create or change a template including positioning of data fields, font variables (color, size, style), and set the background image.

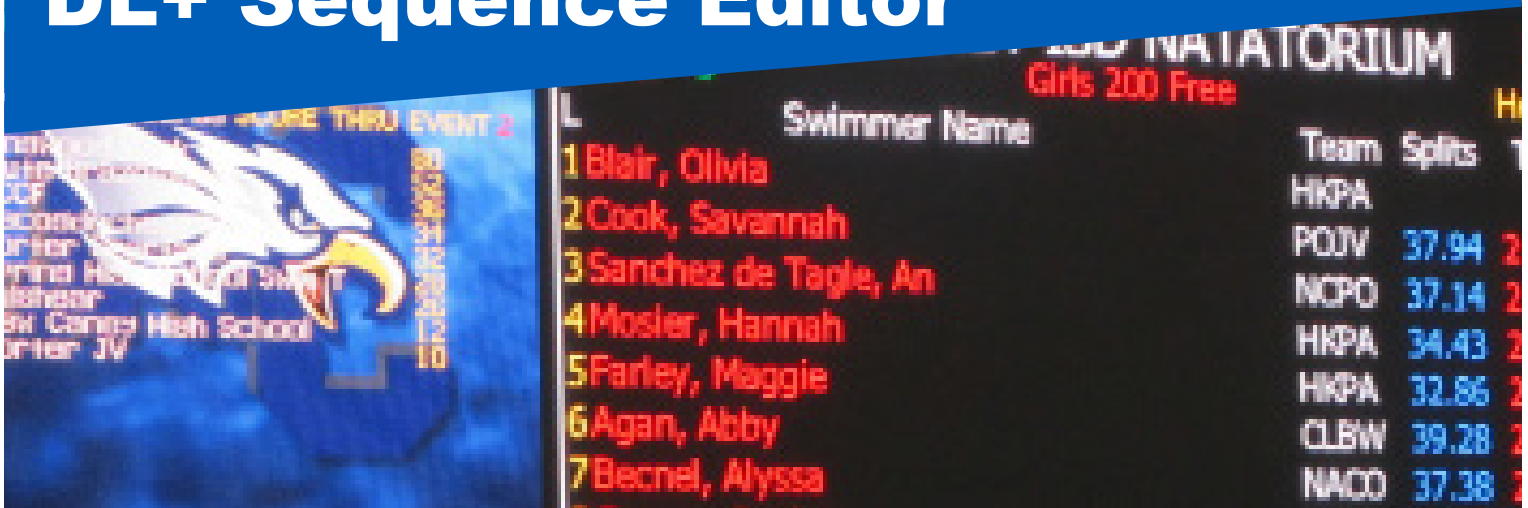
- ✓ **Template Editor allows you to create attractive ways of showing your timing and scoring data.**
- ✓ **Editing a template is easy, showing you what the display will look like as you place items on the screen.**

## Key Features:

- Variable template items depending on sport
- Time of day, with seconds (from PC)
- Static text
- Quick messages
- Athlete names and team affiliations
- Team names
- 4 record times / time standards
- Meet name and event title
- **Fonts**
  - Any Windows font or LED optimized font
  - 8 standard font sizes custom designed for CTS LED video displays
  - Any other TrueType or OpenType fonts
- **Data from CTS consoles or controllers:**
  - Lane, place, time
  - Event and heat data
  - Dive descriptions
  - Scoring and timing data
  - Team scores and event results
  - Player statistics
  - Inning by inning scores



# DL+ Sequence Editor

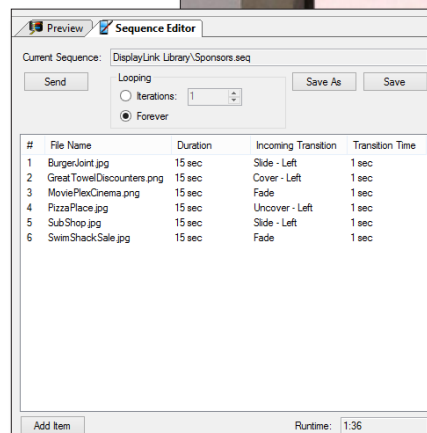


Sequence Editor allows you to create and package a series of items to display on your LED matrix display, facilitating using your library for more than just competition. You can pre-package and save sequences to the DL+ library so that they can be used at the click of a button.

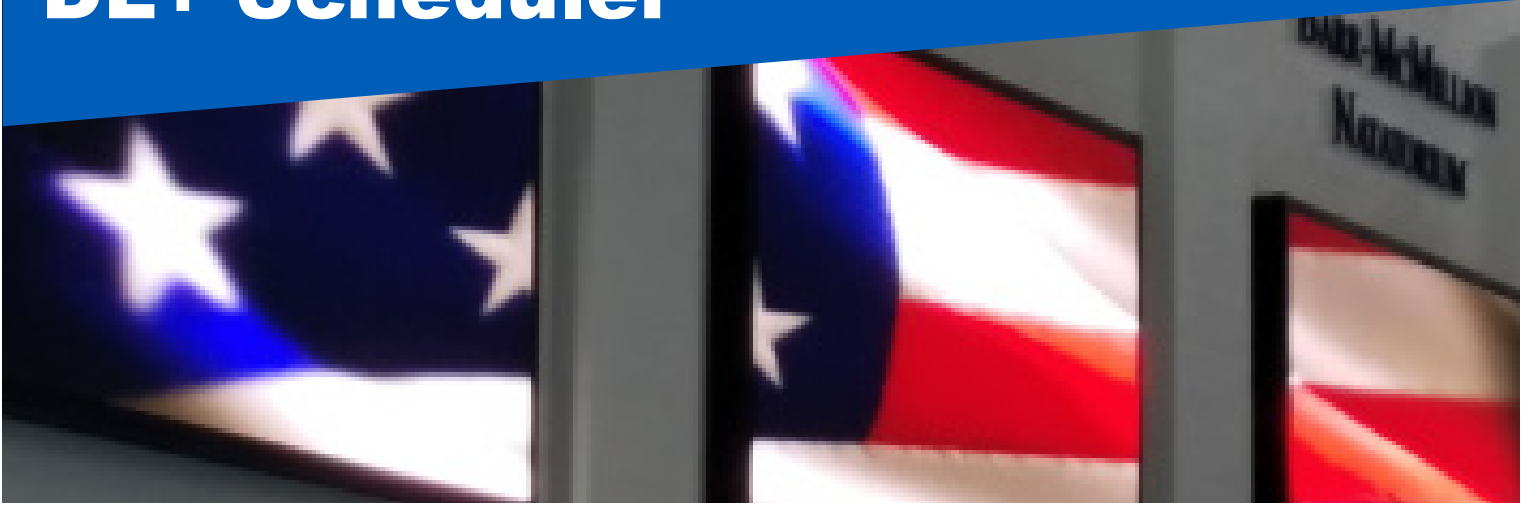
- ✓ Sequences can include any item from the DL+ library including images, templates, and animations. Each item in a sequence has its own duration of display, which you can set with a resolution of 1/10th of a second. Customize transitions between items to add visual interest. Set up sequences to play in a loop until stopped, or for a fixed number of recurrences.
- ✓ Sequences combined with scheduling features give you a very powerful tool for communicating with your facility's users.

## Sequence Editor can be used for:

- Sponsor messages and logos
- Cycling advertisements with constant pace clock and time of day
- Competition warm-up messages
- Announcements
- Holiday reminders
- Rules & regulations
- Facility hours
- General information



# DL+ Scheduler



The Scheduler gives you the power to plan, program, and customize what's shown on your display, without having an operator at the DL+ computer at all times.

- ✓ You can either schedule an item to appear once; or on a customized repeating schedule by day, week, month, or specific days of the week. For example, you could set up a sequence (including general facility information, time of day, pace clock, and multiple advertisers) to run every day at noon for 90 minutes during open lap swim.

## Software Specifications:

- Supported graphic formats: jpg, bmp, png, and gif
- Supported animation/video formats: avi, mpg, and wmv

	July 30	July 31	August 01	August 02	August 03
8 am					
9 <sup>00</sup>	↻ Rec Swim Pace Clock.tpl	↻ Rec Swim Pace Clock.tpl	↻ Rec Swim Pace Clock.tpl	↻ Rec Swim Pace Clock.tpl	↻ Rec Swim Pace Clock.tpl
10 <sup>00</sup>					
11 <sup>00</sup>					
12 pm					
1 <sup>00</sup>	↻ Facility Announcements.seq	↻ Facility Announcements.seq	↻ Facility Announcements.seq	↻ Facility Announcements.seq	↻ Facility Announcements.seq
2 <sup>00</sup>					
3 <sup>00</sup>					
4 <sup>00</sup>					





Call today and let us help you get complete control of your video displays.  
(800) 279-0111 | +1(970) 667-1000





**Colorado  
TIME SYSTEMS**  
A **PLAYCORE** Company

[www.coloradotime.com](http://www.coloradotime.com) | [info@coloradotime.com](mailto:info@coloradotime.com)  
(800) 279-0111 | +1(970) 667-1000