



# AQUAGRIP® TOUCHPADS



**Colorado Time Systems' touchpads have been used in every continent on the globe.**

## Key Features:

### Tough, durable, and gentle

AquaGrip® touchpads combine the best starting and turning surface available with the proven design that all Colorado Time Systems' touchpads have used since 1972. They respond to a touch that's remarkably light - but provide a push-off that's thoroughly firm. AquaGrip® touchpads feature all-plastic construction that is tough and durable; yet their textured, non-skid surface is gentle on swimmers' hands and feet. The solid quarter inch backbone, molded one-piece connectors and non-corrosive finish provide long-lasting reliability.

### Easy to install, stays in place

Set-up is easy, thanks to our mounting system customized for your pool. They hold your pads in place without hardware or holes (in most pools) and prevent unwanted vertical and lateral movement. Best of all, you don't need any tools. Our touchpads can even be left in the water for the duration of an entire meet.

### Sensitive to the lightest touch

Dependable, internally sealed switches record even the lightest swimmers' touch on the fully active face of all CTS pads, and also along the top edge of gutter-mounted pads. You get an accurate finish every time with no "dead spots."

### A perfect size for every lane

At Colorado Time Systems, we will help you select the right touchpad for your facility. Choose from standard-sized flat- or gutter-mount pads. Custom widths are also available.

### Touchpad caddy

A caddy that holds up to ten gutter-hung touchpads is available.

[www.coloradotime.com](http://www.coloradotime.com) | [info@coloradotime.com](mailto:info@coloradotime.com)

(800) 279-0111 | +1(970) 667-1000

1551 E 11th St. | Loveland, CO 80537 | USA

REV: 05/23



*Our products are  
proudly manufactured  
in Loveland, CO*



**Colorado  
TIME SYSTEMS**  
A PLAYCORE Company



# AQUAGRIP® TOUCHPADS

## Specification:

All of our touchpads have an internal full face switch, as well as a top edge switch on gutter-mount touchpads. Most of our touchpads are available with either our standard non-skid surface, or our patented AquaGrip® surface. Our touchpads are an all-plastic construction, and include a 10-foot cable with molded connector. Less than 5vDC on-deck power required (electronically isolated at the timer).

Custom size touchpads are also available.

Description	AquaGrip® Gutterhung	Weight	AquaGrip® Flatwall*	Weight
188.5cm x 90cm touchpad	TP-188.5G	47 lbs (21.3kg)	TP-188.5GF	47 lbs (21.3kg)
195cm x 90cm touchpad	TP-195G	49 lbs (22.2kg)	TP-195GF	49 lbs (22.2kg)
240cm x 90cm touchpad	TP-240G	66 lbs (30kg)	TP-240GF	66 lbs (30kg)
60" x 22" touchpad (152.4cm x 55.88cm) Recommended for lanes 66 - 84" wide	TP-60G	28 lbs (12.7kg)		
60" x 24" touchpad (152.4cm x 60.96cm) Recommended for lanes 66 - 88" wide			TP-60GF	33 lbs (15kg)
78" x 22" touchpad (198.12cm x 55.88cm) Recommended for lanes 84 - 96" wide	TP-78G	35 lbs (15.9kg)		
78" x 24" touchpad (198.12cm x 60.96cm) Recommended for lanes 84 - 96" wide			TP-78GF	40 lbs (18.1kg)
96" x 22" touchpad (243.84cm x 55.88cm)	TP-96G	45 lbs (20.4kg)		

## Accessories:

**TPM-D:** Touchpad test meter. Meter shows touchpad open and closed circuit status. Meter also tests pushbuttons, data cable, deck plates, and scoreboard.

**VP-2:** Vacuum pump

**Touchpad caddy:** Storage caddies available for touchpads; each caddy holds up to ten touchpads. Aluminum construction and four casters allow for easy transportation.

[www.coloradotime.com](http://www.coloradotime.com) | [info@coloradotime.com](mailto:info@coloradotime.com)

(800) 279-0111 | +1(970) 667-1000

1551 E 11th St. | Loveland, CO 80537 | USA

REV: 05/23



*Our products are  
proudly manufactured  
in Loveland, CO*



**COLORADO  
TIME SYSTEMS**  
A PLAYCORE Company



# AQUAGRIP® TOUCHPADS

## Profile Gutter Diagram:

When ordering touchpads, select the diagram below that best depicts your pool gutter. Enter all requested dimensions (indicated by an arrow), and note water level. Please return to: Colorado Time Systems - Sales Department | +1(970)667-5876 (fax) | info@coloradotime.com.

School Organization: \_\_\_\_\_

Name: \_\_\_\_\_

Phone: \_\_\_\_\_ Fax: \_\_\_\_\_ email: \_\_\_\_\_

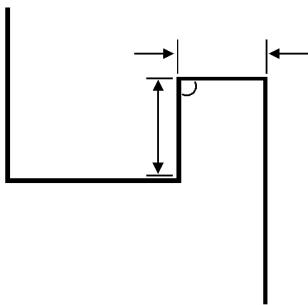


Diagram 1

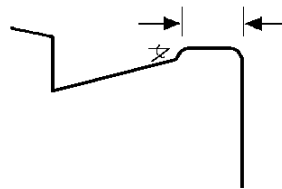


Diagram 2

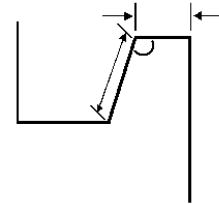


Diagram 3

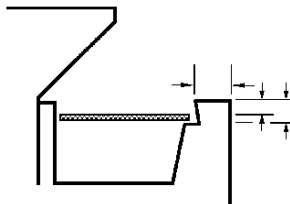


Diagram 4

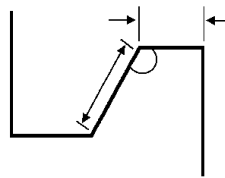


Diagram 5

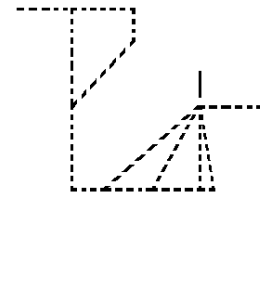
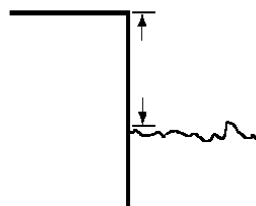
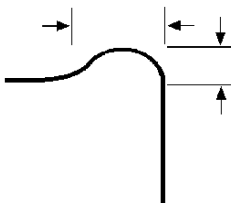


Diagram 6



[www.coloradotime.com](http://www.coloradotime.com) | [info@coloradotime.com](mailto:info@coloradotime.com)

(800) 279-0111 | +1(970) 667-1000

1551 E 11th St. | Loveland, CO 80537 | USA

REV: 05/23



Our products are  
proudly manufactured  
in Loveland, CO



**Colorado  
TIME SYSTEMS**  
A PLAYCORE Company