



# Dolphin Wireless Stopwatch Timing System Set Up

## Configure Software/Base

Connect base unit to laptop with USB cable. Open Hy-Tek Meet Manager, and open Dolphin from the Interface menu on the Run screen. In the Dolphin interface, set the channel on the base by clicking the Channel box and selecting the desired channel.

## Configure starter:

TRIG = CTS for use with CTS electronic start system  
TRIG = NC for use with a normally-closed electronic start system  
Select CHAN to set channel number. The starter must be on the same channel as the base.  
*(See How to Change Settings for details)*

**ON/OFF:** Press and hold the Reset button to turn watches and starter on or off.

## Configure lane watches:

Set LANE (1-10) and TIMER (A, B or C) for each watch.  
Select CHAN to set channel number. All watches must be on the same channel as the starter and the base.  
*(See How to Change Settings for details)*

**HOW TO CHANGE SETTINGS:** Press and hold Reset and immediately press the Start/Stop button. Hold them both until unit enters the menu. Release the Reset button and then the Start/Stop button.

Press the Start/Stop button to change the setting for the current menu option.  
Press Reset to advance to the next menu option.

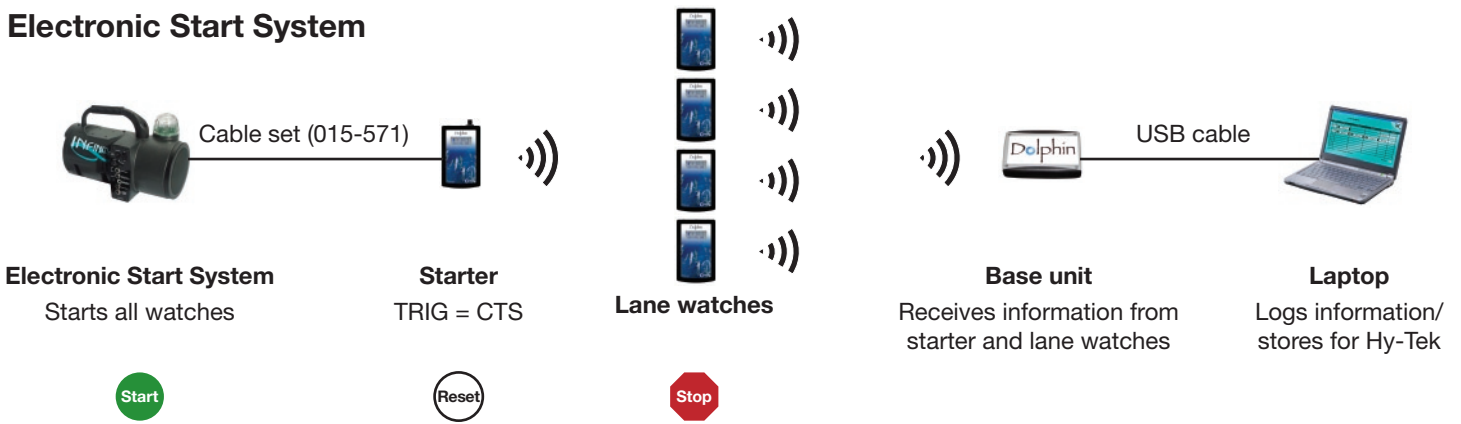
Accessories and Replacement Parts	
R-1004-0505	Base
R-1004-0506	Watch
R-1004-0507	Starter
R-015-569	USB cable
K-DSS-1	Kit- Starter to CTS Infinity start system
K-DSS-2	Kit- Starter to CTS Champ Start
R-045-011	Hard-sided carrying case (holds up to 27 devices)

Battery: 9-volt; provides 40+ hours of operation.

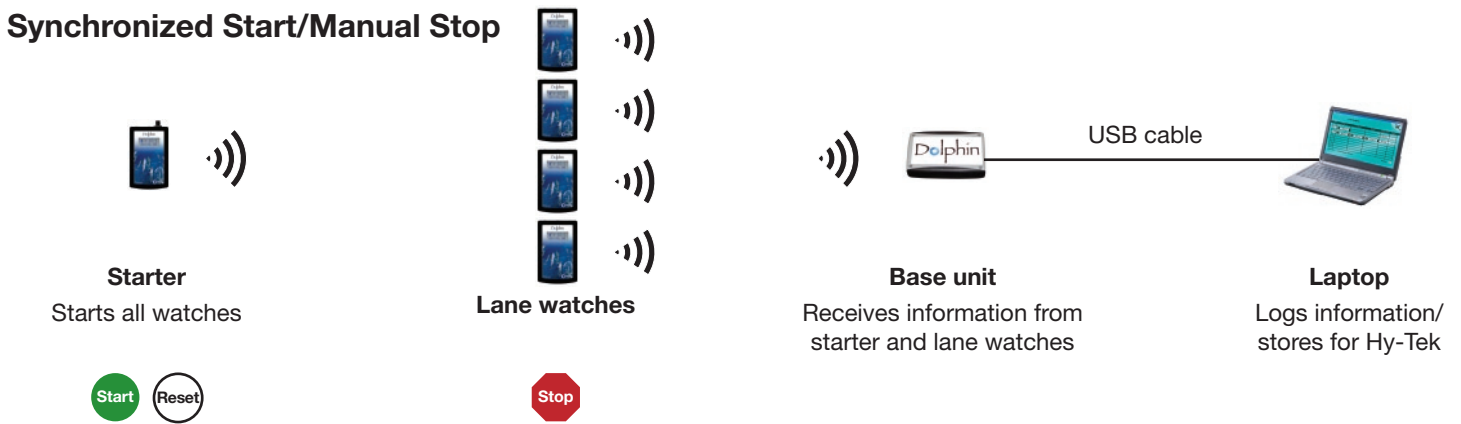
***NOTE: When not in use, the Dolphin system should be stored away from the pool deck to minimize corrosion.***

Colorado Time Systems  
1551 E. 11<sup>th</sup> Street, Loveland, CO 80537  
Phone: 970-667-1000 x256 Fax: 970-667-1032 Toll free: 800-287-0653 ext. 256  
www.coloradotime.com E-mail: customerservice@coloradotime.com

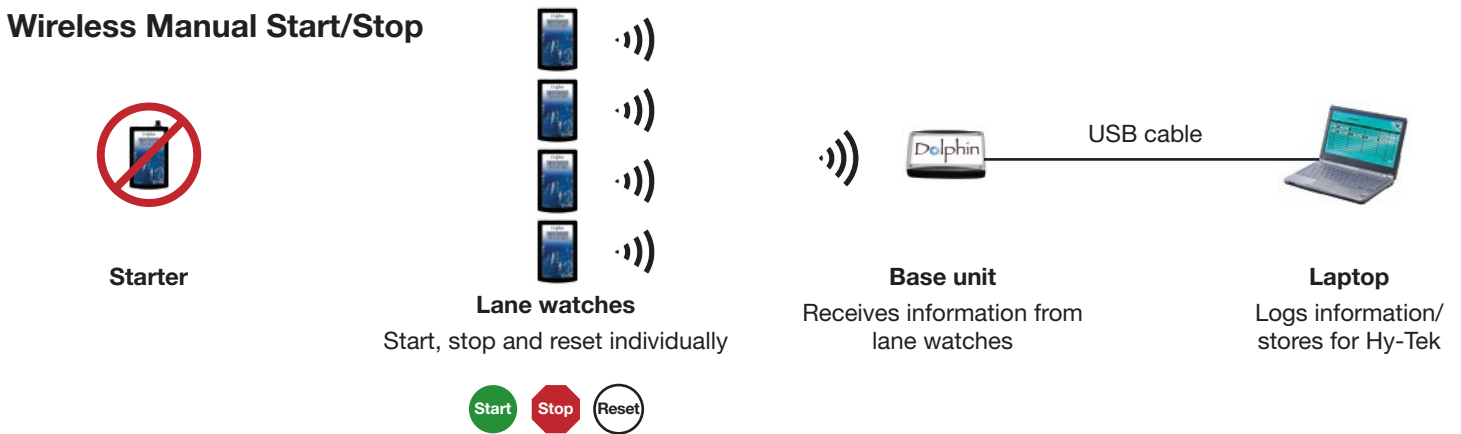
## Electronic Start System



## Synchronized Start/Manual Stop



## Wireless Manual Start/Stop



### FCC Compliance Statement:

This device complies with Part 15 of the FCC Rules. Operation is subject to the following two conditions: (1) this device may not cause harmful interference, and (2) this device must accept any interference received, including interference that may cause undesired operation.